



C-172RG CHECKLIST

PREFLIGHT INSPECTION

CABIN

1. DocumentsARROW
2. Flight Plan & Charts AVAILABLE
3. Aircraft Wt & Balance CHECK
4. Parking Brake SET
5. Control Wheel Lock REMOVE
6. Magnetos OFF
7. Avionics Master OFF
8. Landing Gear Lever DOWN
9. Master (ALT & BAT) ON
10. Lights & Pitot Heat CHECK
11. Fuel Quantity (L & R) CHECK
12. Flaps EXTEND 10°
13. Gear Down Indicator ILLUMINATED
14. Avionics Cooling Fan AUDIBLE
15. Master (ALT & BAT) OFF
16. Circuit Breakers CHECK IN
17. Fire Extinguisher CHECK
18. Fuel Selector Valve BOTH
19. Alternate Static Air Valve OFF
20. Elevator Trim SET FOR TAKEOFF

EMPENNAGE

1. Baggage Door OPEN (LEAVE KEY)
2. Tail Tiedown REMOVE
3. Rear Control Surfaces CHECK
4. Elevator Trim Tab CHECK
5. Antennas CHECK

RIGHT WING

1. Right Flap & Aileron CHECK
2. Right Wing General Condition .. CHECK
3. Right Wing Tiedown REMOVE
4. Right Main Wheel & Tire CHECK
5. Right Main Brake Condition CHECK

6. Right Wheel Chocks REMOVE
7. Right Wing Fuel Sump DRAIN
8. Right Fuel Qty & Cap CHECK

NOSE AREA

1. Engine Heater.. UNPLUG (if necessary)
2. Engine Oil CHECK (6 qts min)
3. Fuel Strainer DRAIN (4 secs.)
4. Nosewheel Tire & Strut CHECK
5. Nose Gear Doors CHECK
6. Nosewheel Chocks REMOVE
7. Cowl Plugs REMOVE
8. Engine Cooling Air Inlets CHECK
9. Propeller & Spinner CHECK
10. Landing Lights CHECK
11. Air Filter CHECK
12. Static Ports (both sides) CHECK

LEFT WING

1. Left Fuel Quantity & Cap CHECK
2. Fuel Tank Vent Opening CHECK
3. Stall Warning Vane CHECK
4. Pitot Tube Cover REMOVE
5. Left Wing General Condition CHECK
6. Left Aileron & Flap CHECK
7. Left Wing Tiedown REMOVE
8. Left Main Wheel & Tire CHECK
9. Left Main Brake Condition CHECK
10. Left Wheel Chocks REMOVE
11. Left Wing Fuel Sump DRAIN
12. Baggage Door CLOSED & LOCKED

BEFORE ENGINE START

1. Preflight Inspection COMPLETE
2. Hobbs & Tach... NOTE IN CLIPBOARD
3. Passenger Briefing:
 - a. Seat Adjustment CHECK
 - b. Seat Belts LATCH / UNLATCH
 - c. Doors OPEN / CLOSE / LOCK
 - d. Windows OPEN / CLOSE / LOCK
 - e. Off-airport landings BRIEF
 - f. Weather BRIEF
 - g. Smoking NO
4. Seats & Seatbelts .. CHECK & ADJUST
5. Brakes TEST & SET
6. Circuit Breakers CHECK IN

7. Electrical Equipment OFF
8. Avionics Master OFF
9. Fuel Selector Valve BOTH
10. Cowl Flaps OPEN
11. Landing Gear Lever DOWN
12. Flight Controls FREE & CORRECT

ENGINE START

1. Beacon ON
2. Carburetor Heat OFF
3. Master Switch (ALT & BAT) ON
4. Mixture RICH
5. Throttle PUMP ONCE or TWICE
6. Prime AS NECESSARY
7. Fuel Pump ON (if engine is hot)
8. Throttle OPEN ½ INCH
9. Propeller Area CLEAR
10. Magnetos Switch START
11. Throttle 1000 RPM
12. Oil Pressure CHECK
13. Mixture SET FOR ALTITUDE

BEFORE TAXI

1. Lights AS REQUIRED
2. Flaps RETRACT
3. Transponder STANDBY
4. Avionics Master ON
5. GPS Flight Plan AS REQUIRED
6. Weather / ATIS LISTEN & RECORD
7. COM Radios SET
8. NAV Radios SET
9. Taxi Clearance OBTAINED
10. Taxi Area CLEAR
11. Brakes TEST IMMEDIATELY

TAXI INSTRUMENT CHECK

1. Airspeed ZERO
2. Attitude Indicator CHECK and SET
3. Altimeter SET
4. Turn Coordinator fluid, wings level, responds to turns
5. Compass fluid, rotates freely
6. Heading Indicator SET to compass
7. VSI NOTE LEVEL
8. Marker Beacon ON and TEST
9. Alternate Static Source CHECK

10. Autopilot CHECK / TEST
 - a) Autopilot Master Switch "ON".
 - RDY, ST, HD, LO-TRK, HI-TRK, Trim-Up, Trim-Dn, Alt, all annunciate.
 - Trim-Up light extinguishes after 2 sec. All others extinguish after 7 sec except ALT, which extinguishes after 10 seconds.
 - b) Engage Stabilizer (ST) Mode, move control wheel to the neutral position.
 - c) Press and hold the Mode Select Switch, until the A/P disconnects
 - d) The RDY light flashes, you should get an audible beeping tone for approx 5 sec.

(NOTE: See System 30 POH for full checklist)

BEFORE TAKEOFF CHECK

1. Brakes SET
2. Seats, Seat backs, Seatbelts ... CHECK
3. Doors CLOSED & LOCKED
4. Altimeter SET
5. Heading Indicator .. SET TO COMPASS
6. Fuel Quantity CHECK
7. Fuel Selector Valve BOTH
8. Fuel Pump ON / CHECK / OFF
9. Elevator Trim SET FOR TAKEOFF

RUNUP

10. Mixture RICH
11. Throttle 1700 RPM
12. Mixture SET FOR ALTITUDE
13. Propeller CYCLE
14. Carburetor Heat ... CHECK RPM DROP
15. Magnetos CHECK
150 max drop, 50 max difference
16. Ammeter CHECK
17. Engine Indicators CHECK
18. Suction Gage CHECK
19. Throttle CHECK IDLE
20. Throttle 1000 RPM or less
21. Throttle Friction SET
22. COM Radios SET
23. NAV Radios SET
24. GPS Flight Plan AS DESIRED
25. Transponder... ALT / CHECK SQUAWK
26. Lights AS REQUIRED
27. Heading Bug SET RWY HDG
28. Brakes RELEASE
29. Takeoff Clearance OBTAINED

NORMAL TAKEOFF

Flaps..... UP
 Carburetor Heat..... OFF
 Cowl Flaps..... OPEN
 Throttle FULL
 Lift Nosewheel..... WHEN ABLE
 Accelerate in G.E..... TO 70 KIAS
 Brakes APPLY when airborne
 Landing Gear..... RETRACT
 Climb Airspeed (V_y)..... 80 KIAS

SHORT-FIELD TAKEOFF

Flaps..... UP
 Carburetor Heat..... OFF
 Cowl Flaps..... OPEN
 Brakes HOLD
 Throttle FULL
 Brakes RELEASE
 Rotate..... 60 KIAS
 Obstacle Climb A/S (V_x)..... 65 KIAS
 Brakes APPLY when airborne
 Landing Gear..... RETRACT

NORMAL CLIMB

Airspeed 85 to 95 KIAS
 Throttle 25 in MP
 Propeller 2500 RPM

CRUISE

Throttle 15 to 25 in MP
 Propeller 2100 to 2500 RPM
 Cowl Flaps..... CLOSED
 Elevator Trim ADJUSTED
 Mixture..... SET FOR ALTITUDE
 Engine Gages..... CHECK
 Heading Indicator SET TO COMPASS
 Autopilot AS REQUIRED
 Flight Plan VERIFY AND OPEN

If you are unable to return to GJT when expected, please call us at **(970) 254-0444** or toll-free at **1-866-897-7910**.

You may also reach **Bradley Sullivan** at **(970) 210-5527**.

DESCENT

Throttle 2500 RPM (Max)
 Mixture ADJUST AS REQUIRED
 Altimeter SET
 Fuel Selector Valve..... BOTH
 Wing Flaps..... AS DESIRED
 Carburetor Heat..... ON
 Cowl Flaps..... CLOSED

BEFORE LANDING

Cowl Flaps..... CLOSED
 Carburetor Heat..... ON
 Fuel (Gas)..... BOTH
 Undercarriage..... DOWN AND LOCKED
 Landing Gear..... CHECK
 Mixture SET
 Propeller HIGH RPM
 Power SET
 Seats & Seatbelts CHECK & ADJUST
 Switches (lights, etc)..... AS DESIRED
 Autopilot..... OFF

LANDING

Downwind 90 KIAS / FLAPS 10°
 Base Leg 80 KIAS / FLAPS 20°
 Final Leg.... 70 KIAS / FLAPS AS DESIRED
 Landing Gear..... DOWN

GO-AROUND

Throttle FULL
 Carburetor Heat..... OFF
 Flaps..... RETRACT TO 20°
 Climb Airspeed 60 KIAS
 Flaps..... RETRACT at 65 KIAS
 Cowl Flaps..... OPEN

AFTER LANDING

Cowl Flaps..... OPEN
 Flaps..... RETRACT
 Carburetor Heat..... OFF
 Lights AS REQUIRED
 Transponder STANDBY
 Ground Clearance OBTAIN

SHUTDOWN & SECURE

- Fuel Quantity NOTE
- Avionics Master OFF
- Mixture LEAN CUTOFF
- Magnetos OFF (keys on panel)
- Elec Equip..... OFF (except BEACON)
- Master Switch OFF
- Control Lock..... INSTALL
- Fuel Selector Valve..... LEFT or RIGHT
- Hobbs & Tach Times NOTE
- Sunscreen..... INSTALL
- Wheels..... CHOCK
- Tiedowns SECURE
- Cowl Plugs..... INSTALL
- Engine Heater..... PLUG IN (in Winter)
- Flight Plan..... CLOSE

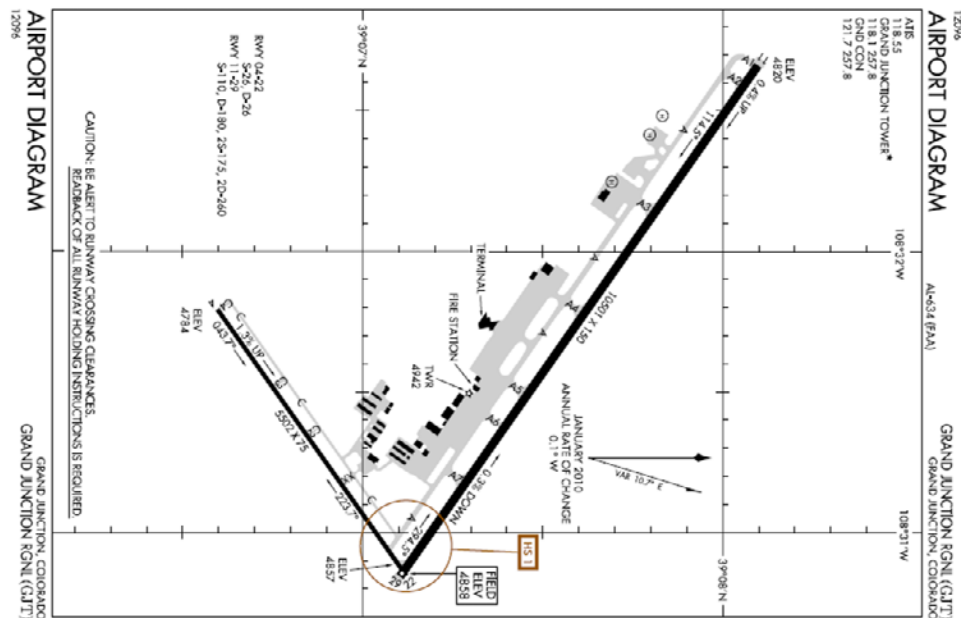
MANUAL GEAR EXTENSION

Gear Light / Circuit Breaker..... CHECK
 Airspeed BELOW 140 KIAS
 Landing Gear DOWN
 Emergency Gear Handle..... EXTEND
 Pump 35 times
 Landing Gear Light..... GREEN

AIRCRAFT SPEEDS

V_A 89 to 106 KIAS
 V_{FE} 100 KIAS
 V_{NO} 145 KIAS
 V_{NE} 164 KIAS
 V_{S1} 48 KIAS
 V_{SO} 40 KIAS
 V_X 65 KIAS
 V_Y 80 KIAS
Best Glide 75 KIAS

Copyright © 2012 Colorado Flight Center Inc



Colorado Flight Center

800 Heritage Way, Grand Junction, CO 81506

Ph: (970) 254-0444 Fax: (970) 254-0445

www.ColoradoFlightCenter.com

